

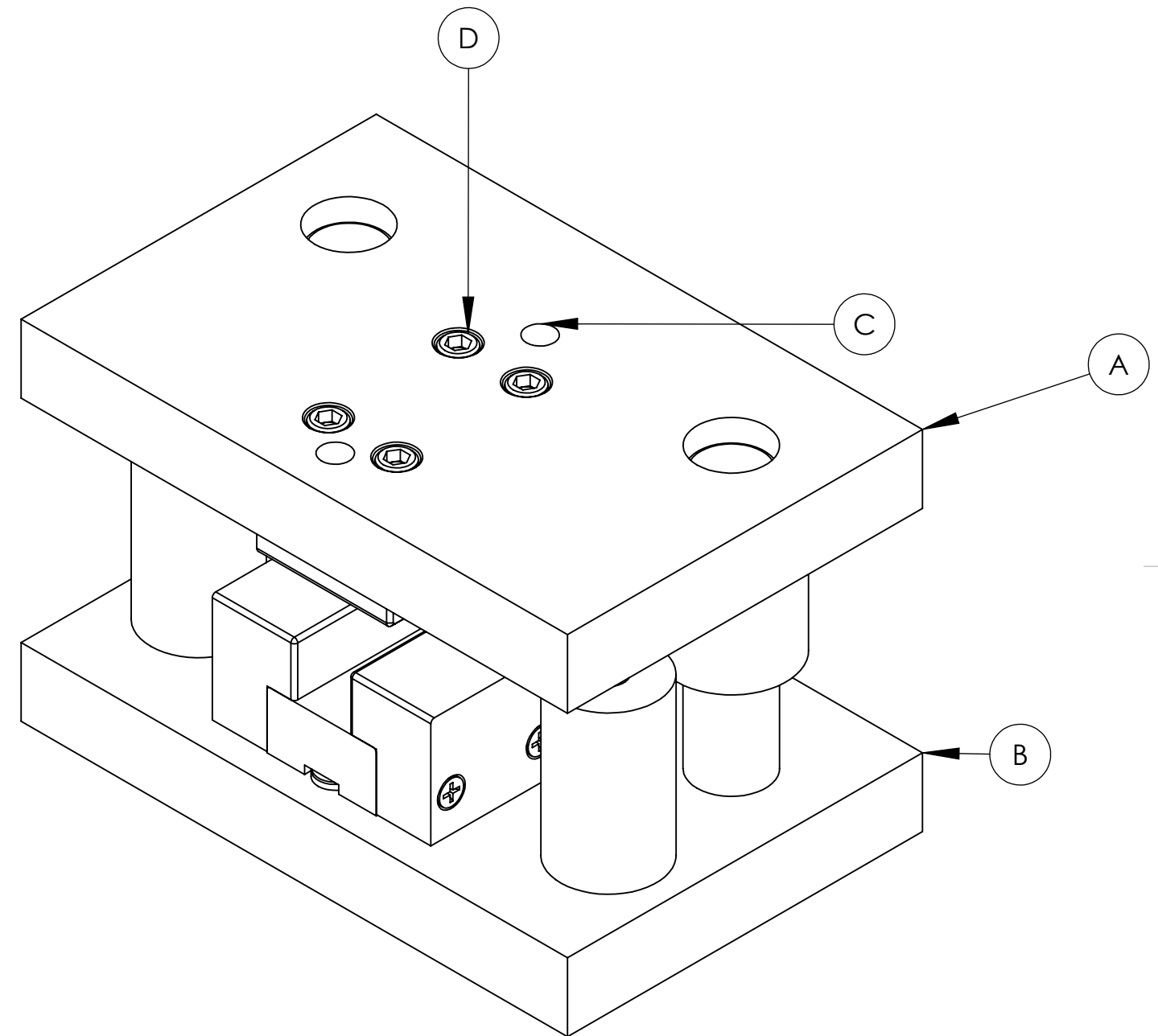
CONGRATULATIONS ON YOUR PURCHASE OF THE #1300 SPEAR DIE

PLEASE READ CAREFULLY BEFORE USE

1) DIE CHANGE OVER

THE #1300 IS DESIGNED TO GIVE YOU THE ABILITY TO QUICKLY CHANGE SIZES OF TOOLING WITHOUT HAVING TO LINE UP CUTTING EDGES. THIS IS ACCOMPLISHED BY USING A TRUE POSITIONING SYSTEM BASED OFF OF FOUR BUTTONS (C).

REMOVE FOUR 3/8-16 BOLTS (D) AND REMOVE DIE HALF OFF OF THE LOCATING BUTTONS. REVERSE PROCESS TO INSTALL NEXT DIE SIZE. PROCESS IS THE SAME ON OPPOSING DIE PLATE.



**CAUTION!
ALWAYS USE ALL
GUARDS ON MACHINES
AND USE SAFETY
GLASSES.**

CONTACT INFORMATION	WEB
	www.projecttool&die.com
NAME	E-MAIL
MIKE L.	projecttool1@shasta.com
CHRIS L.	projecttool3@shasta.com
PHONE	530 243 8903
FAX	530 243 8914

6955 DANYEUR ROAD
REDDING, CA. 96001

**Project Tool & Die
INSTRUCTIONS**

MADE IN THE USA