

A

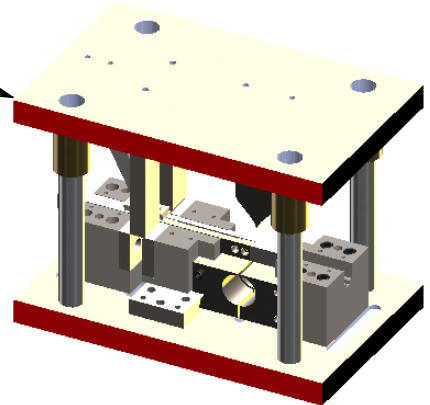
B

C

D

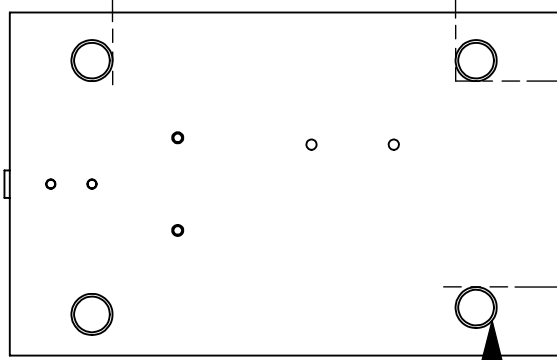
E

TRIMETRIC VIEW FOR REFERENCE ONLY



12.50

A



7.50

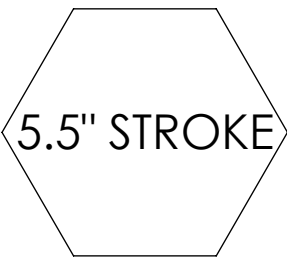
B

DIMENSIONS A - B REPRESENT THE SURFACE AREA AVAILABLE FOR THE RAM

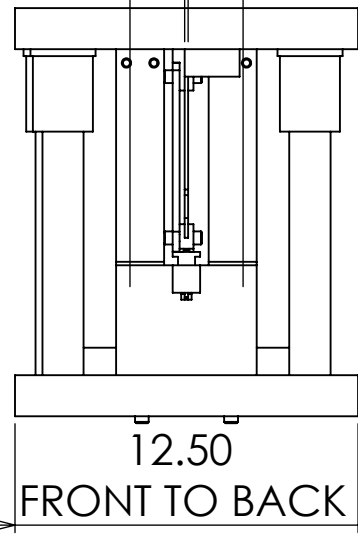
PINS WILL PROTRUDE 2.625" THRU TOP OF DIE AT SHUT HEIGHT

0.125 BLADE THICKNESS

4.13 DISTANCE FRONT TO BACK OF CLAMPING INSERTS



14.88 OPEN HEIGHT



12.50 FRONT TO BACK

UNLESS OTHERWISE SPECIFIED: DIMENSIONS ARE IN INCHES SURFACE FINISH: TOLERANCES: LINEAR: ANGULAR:

FINISH: AS PER PRINTS

DEBUR AND BREAK SHARP EDGES

DO NOT SCALE DRAWING

REVISION

PROJECT TOOL&DIE

	NAME	SIGNATURE	DATE	QUANTITY	
DRAWN	CHRIS		2/20/09	HRC	59/61
CHKD					
APPV'D	MIKE		2/20/09		
F MFG					

TITLE: #5000 CUT-OFF DIE

MATERIAL: ALL CUTTING EDGES AIR HARDENED TOOL STEEL

WEIGHT:

PROPERTY AND CONFIDENTIAL THE INFORMATION CONTAINED IN THIS DRAWING IS THE SOLE PROPERTY OF PROJECT TOOL&DIE. ANY REPRODUCTION OF ANY KIND IS PROHIBITED!

SCALE: 1:7 SHEET 1 OF 1

A4