

CONGRATULATIONS ON YOUR PURCHASE OF THE FINEST NOTCHING TOOL AVAILABLE

PLEASE READ CAREFULLY BEFORE USE

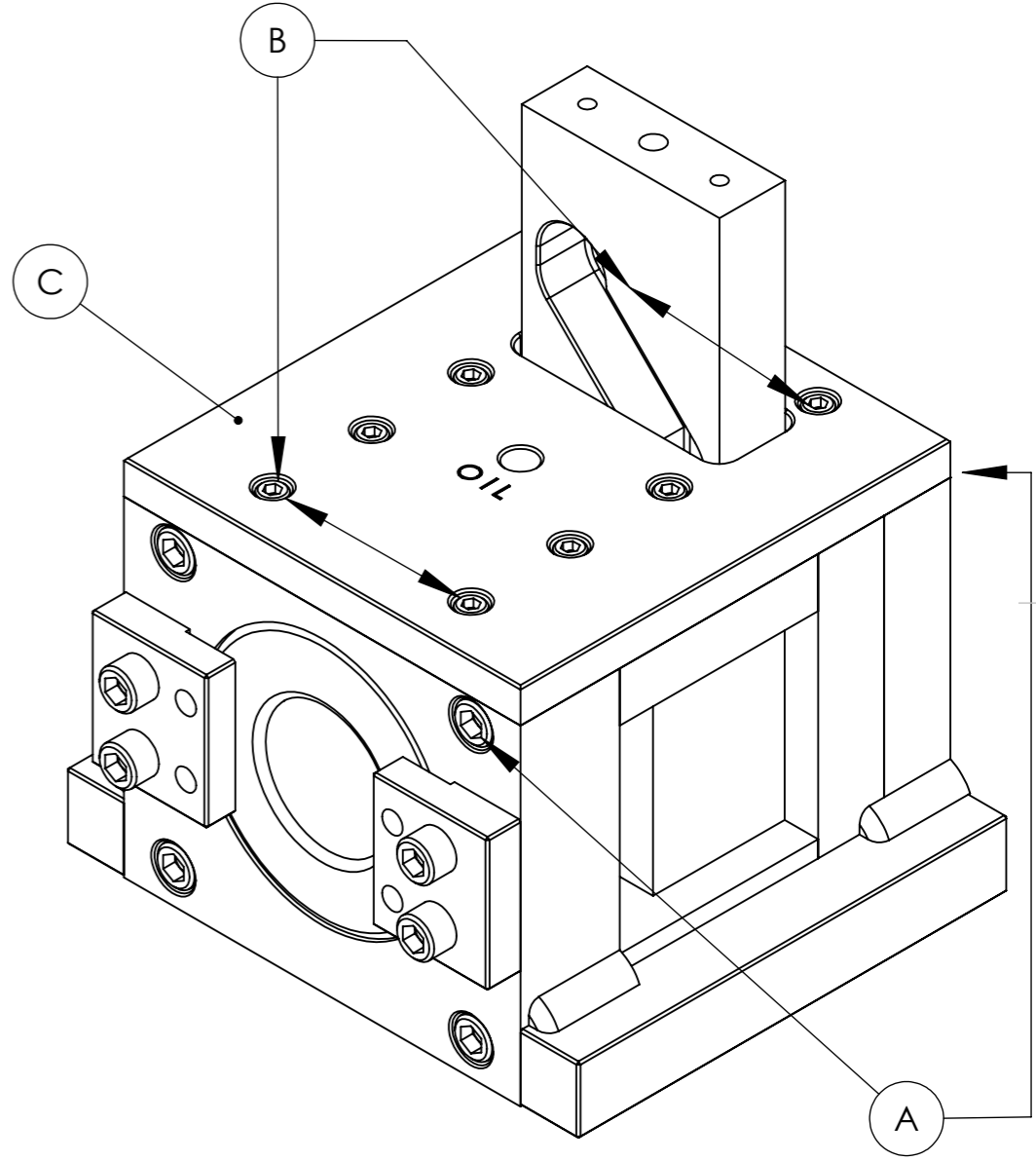
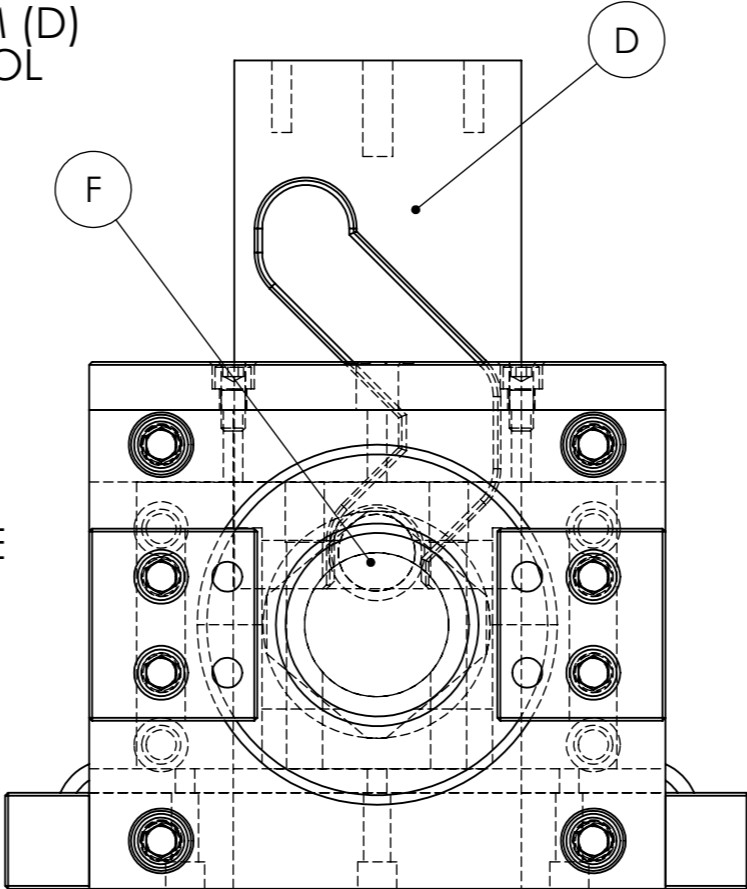
IMPORTANT!

1) TOOL SET-UP

MAKE SURE CAM FOLLOWER (F) DOES NOT LEAVE CAM (D) AT HIGHEST POINT OF STROKE. SEVERE DAMAGE TO TOOL WILL OCCUR!

2) KEEP YOUR TOOL CLEAN

WHENEVER DIRT OR METAL CHIPS ACCUMULATE, PLEASE REMOVE FOUR 3/8-16 BOLTS (A) THAT RETAIN TOP COVER PLATE (C). REMOVE FOUR 1/4-20 BOLTS (B) AND LIFT OFF COVER PLATE (C) EXPOSING PUNCH HOLDER (G). CLEAN PUNCH HOLDER (G) AND RE-LUBRICATE USING NON-SULPHUR BASED HIGH PRESSURE LUBRICANT. REATTACH COVER PLATE (C) WITH BOLTS (B) AND (A).



CAUTION!
ALWAYS USE ALL
GUARDS ON MACHINES
AND USE SAFETY GLASSES.
NEVER REMOVE RETAINING PINS
WHICH HOLDS PUNCH IN
PUNCH HOLDER

CONTACT INFORMATION	WEB www.projecttool&die.com
NAME	E-MAIL
MIKE L.	projecttool1@shasta.com
CHRIS L.	projecttool3@shasta.com
PHONE	530 243 8903
FAX	530 243 8914

6955 DANYEUR ROAD
REDDING, CA. 96001

Project Tool & Die INSTRUCTIONS

MADE IN THE USA